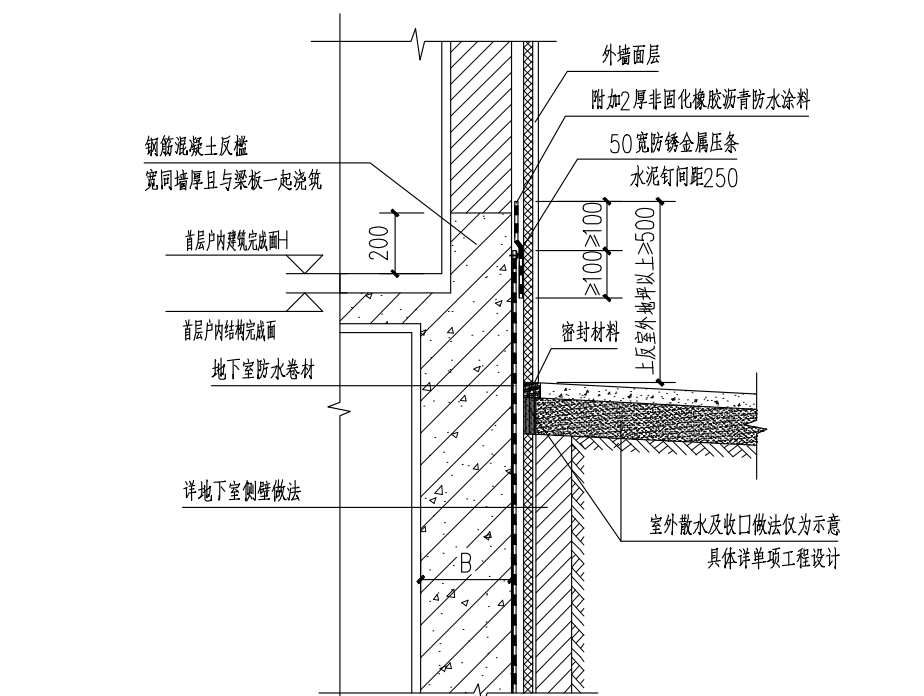
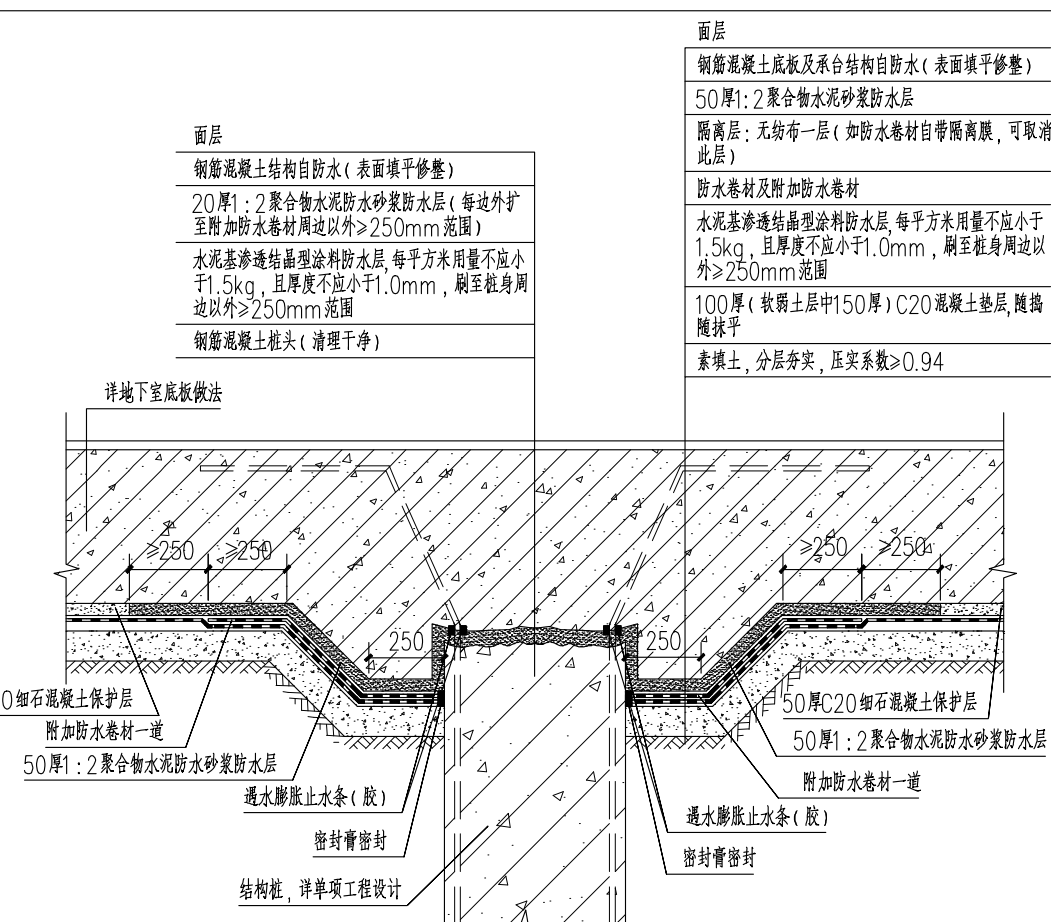


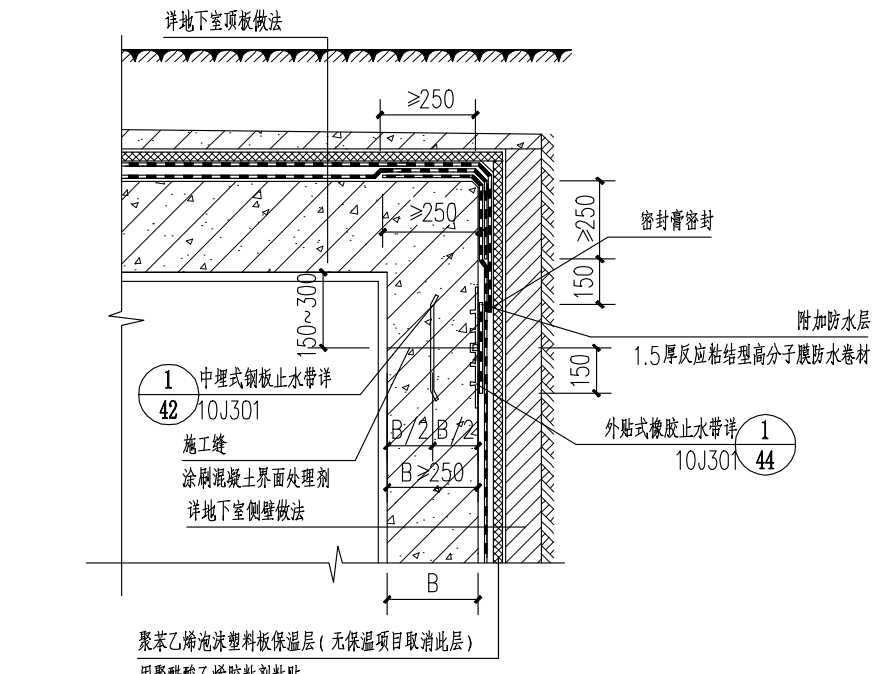
① 全埋式地下室工程防水示意图 1:25



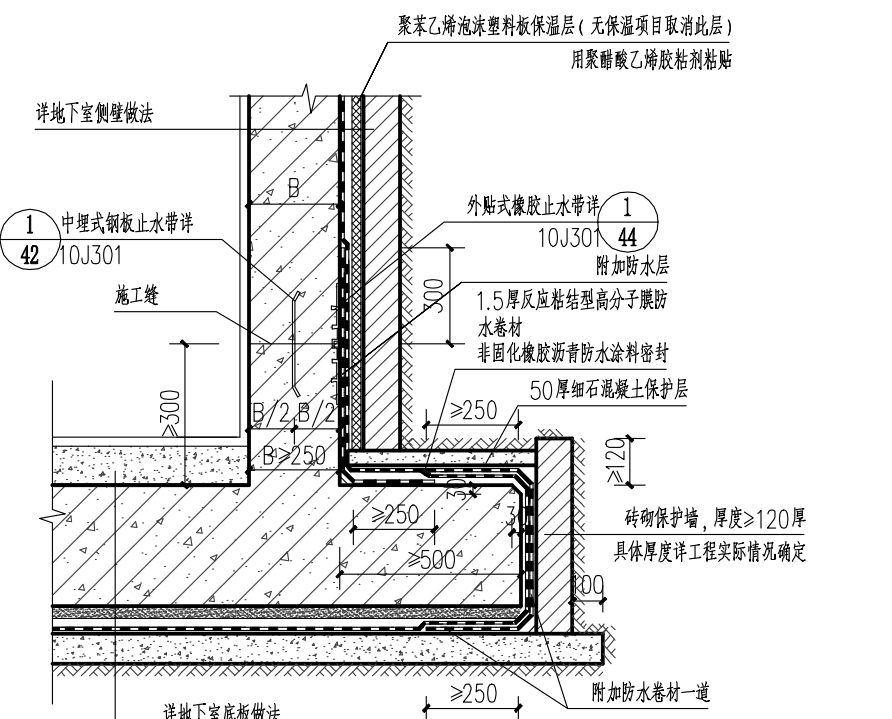
② 散水处防水收头做法 1:25



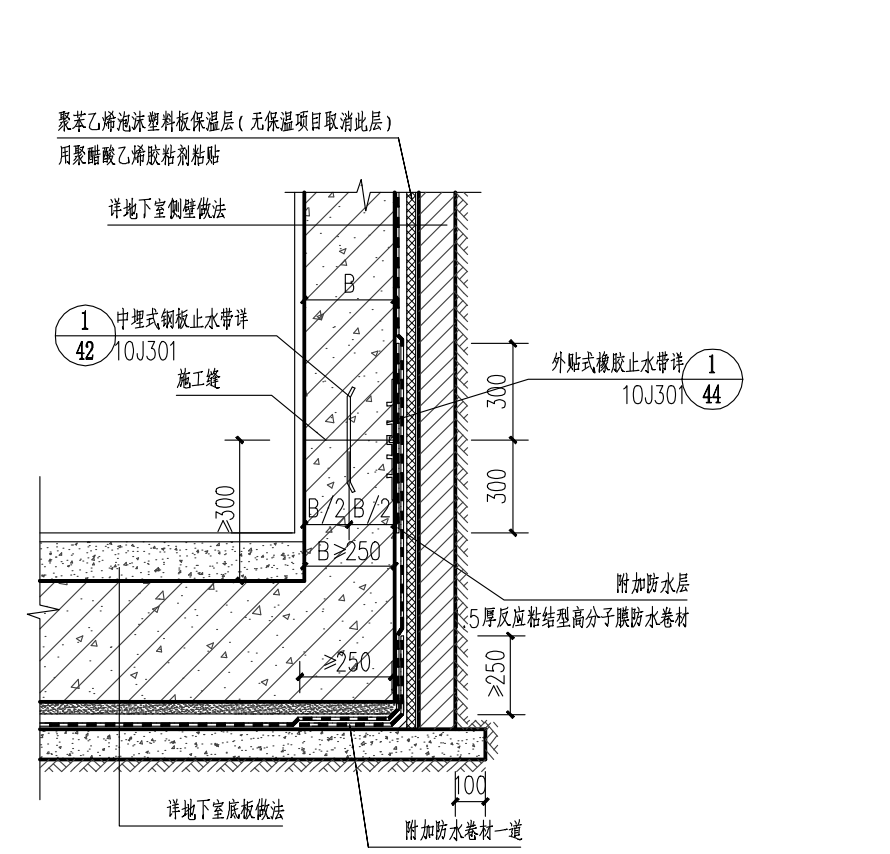
③ 地下室底板桩头防水构造 1:25



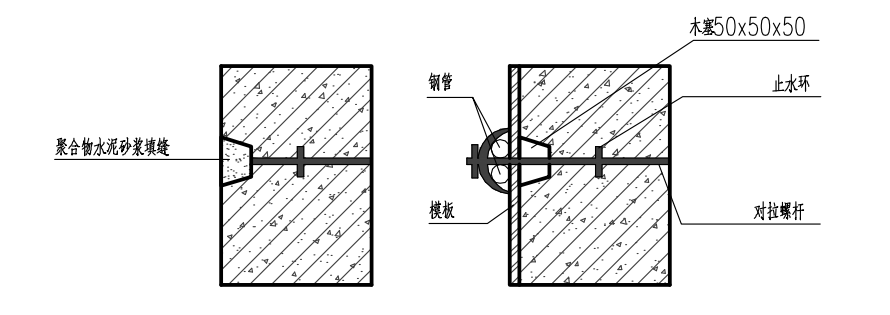
④ 顶板、侧壁交接处防水及施工缝详图 1:25



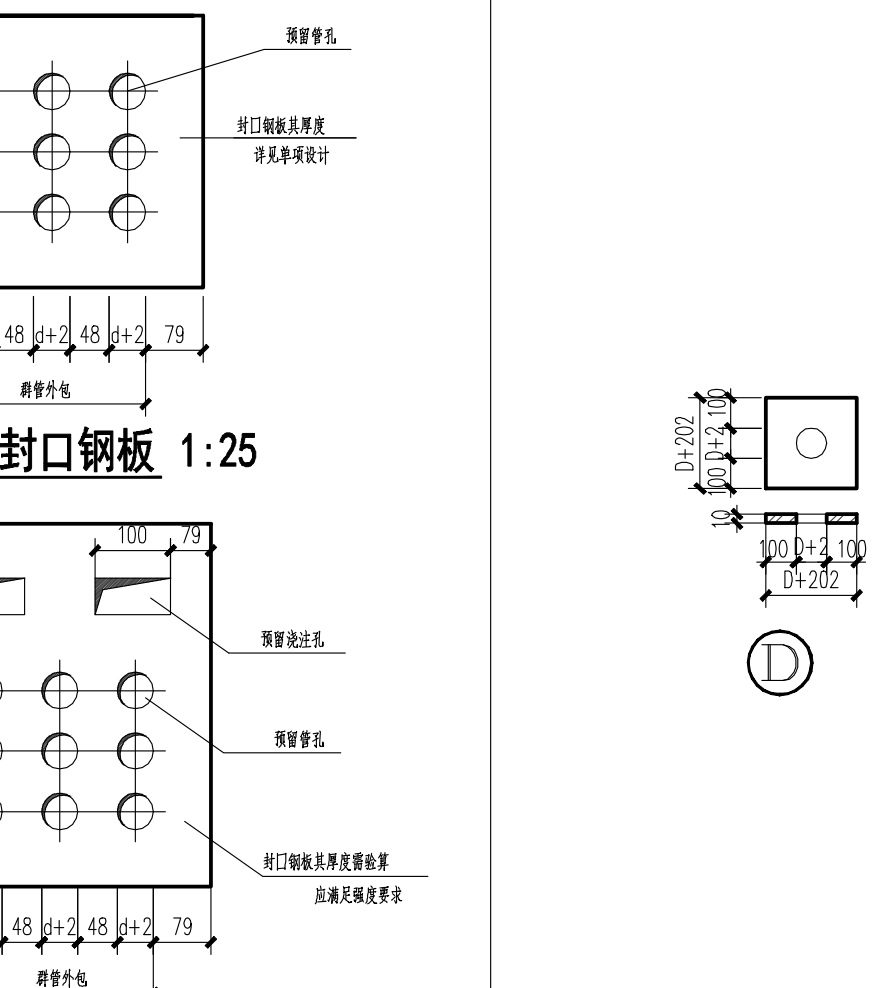
⑤ 底板、侧壁交接处防水及施工缝详图一 1:25



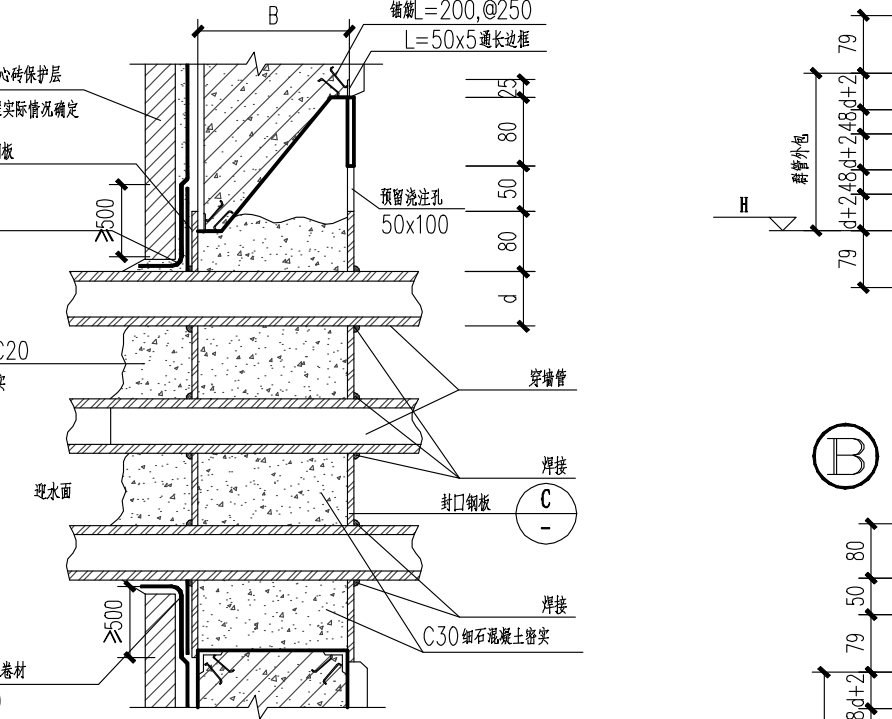
⑥ 地下室侧墙止水螺栓 1:25



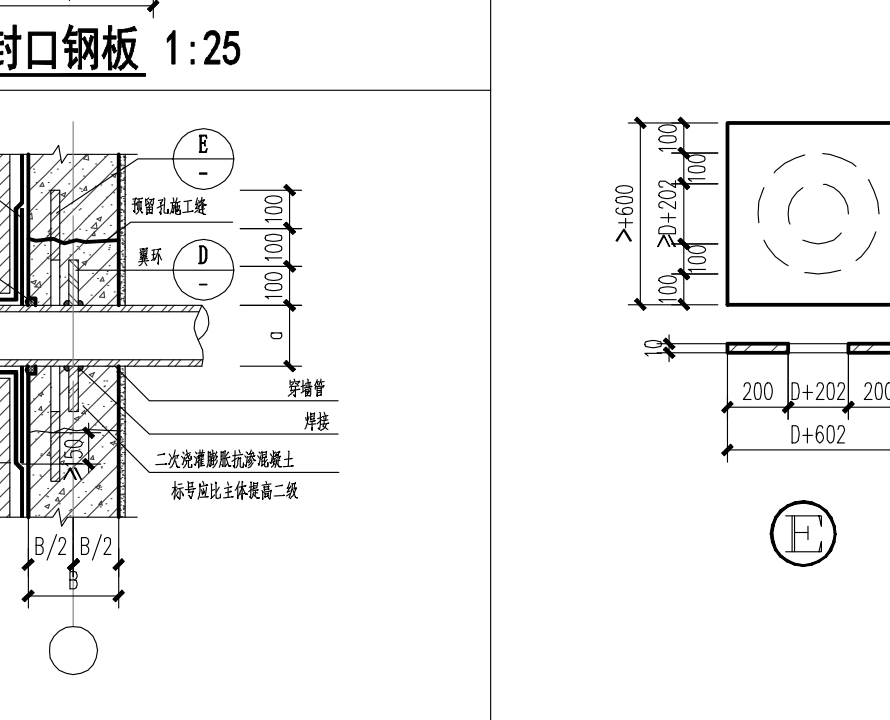
⑦ 迎水面封口钢板 1:25



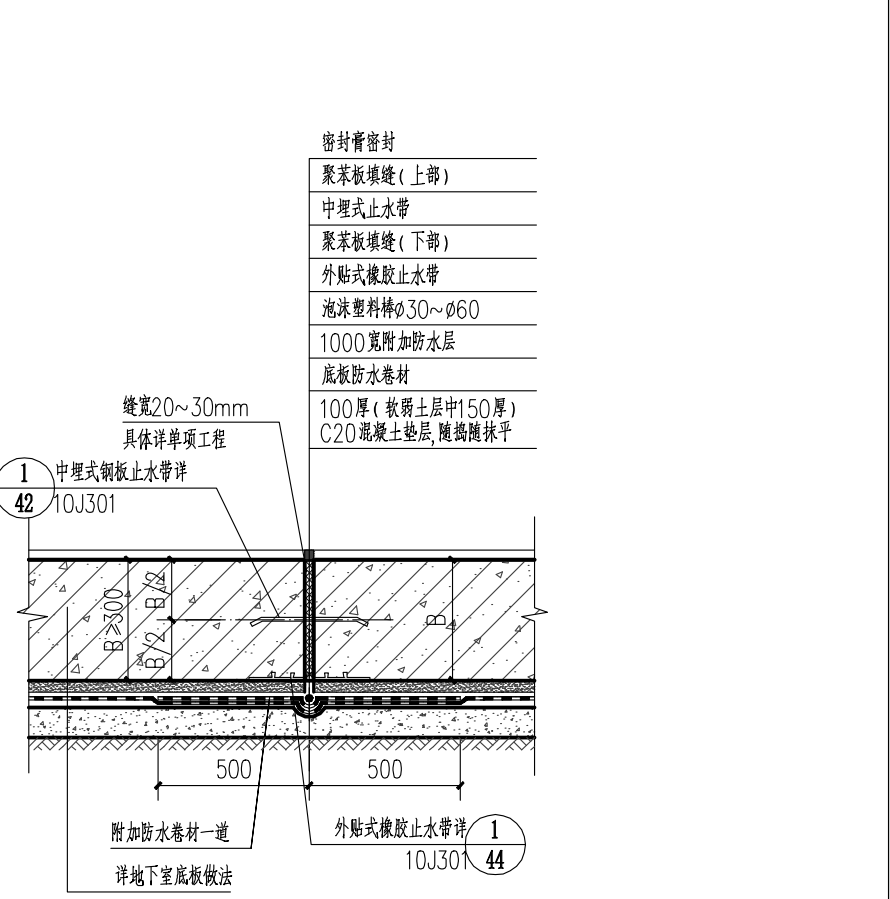
⑧ 背水面封口钢板 1:25



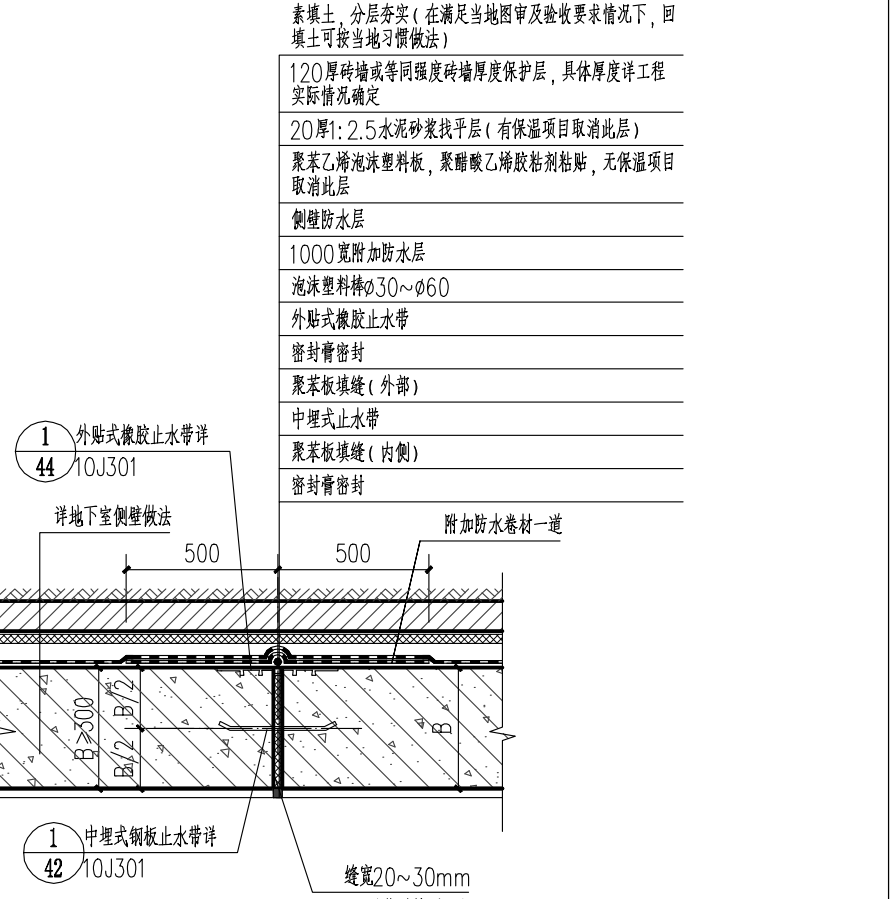
⑨ 固定式穿墙管节点大样图一 1:25



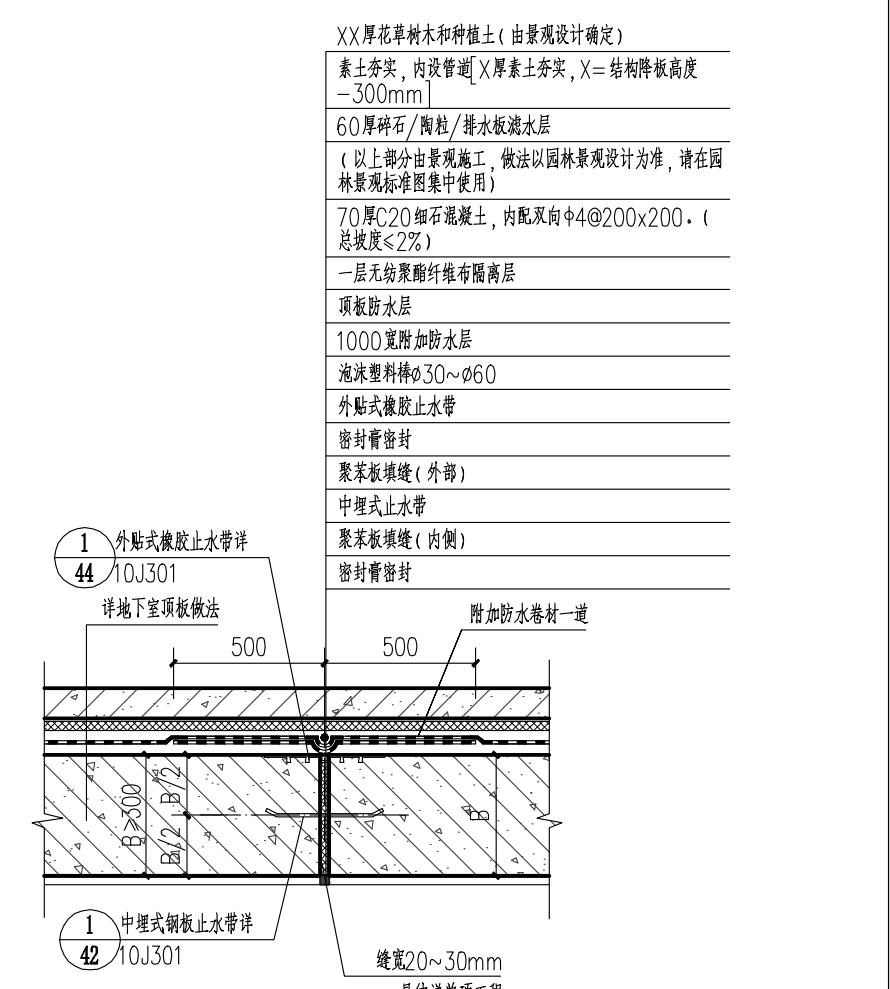
⑩ 固定式穿墙管节点大样图二 1:25



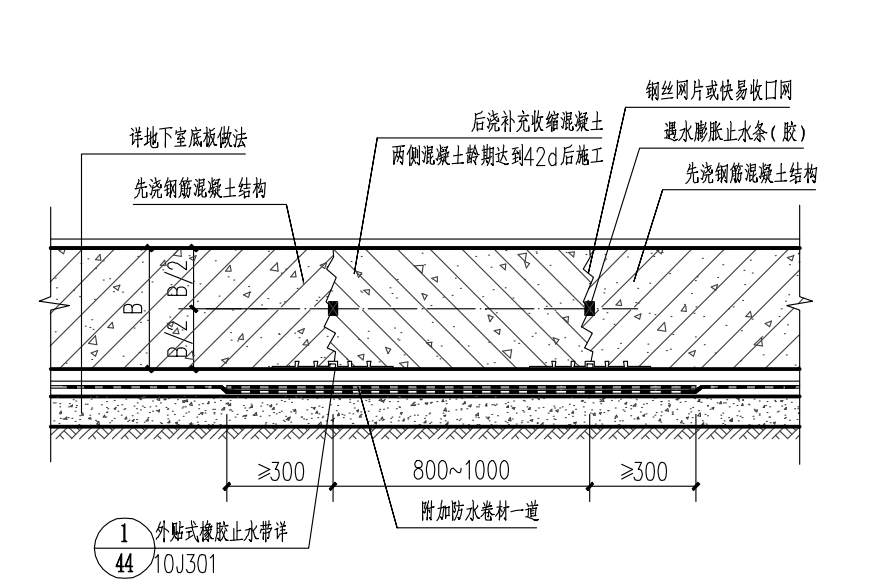
⑪ 底板变形缝防水节点 1:25



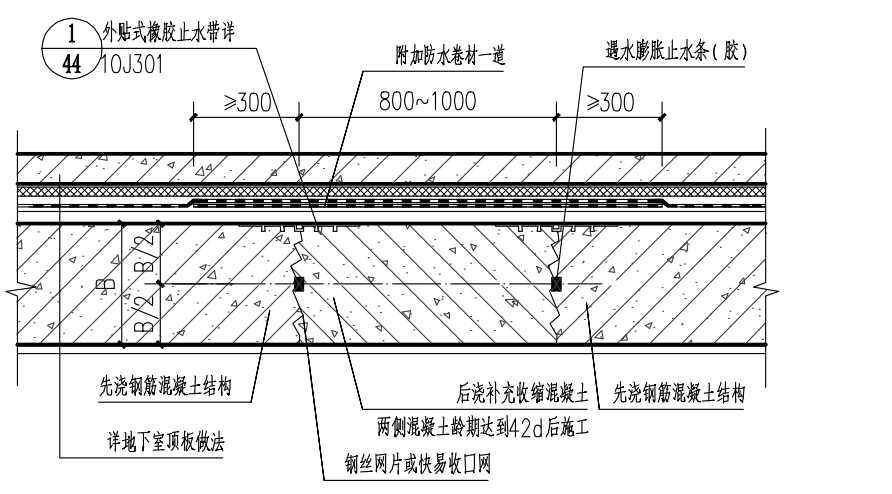
⑫ 侧壁变形缝防水节点 1:25



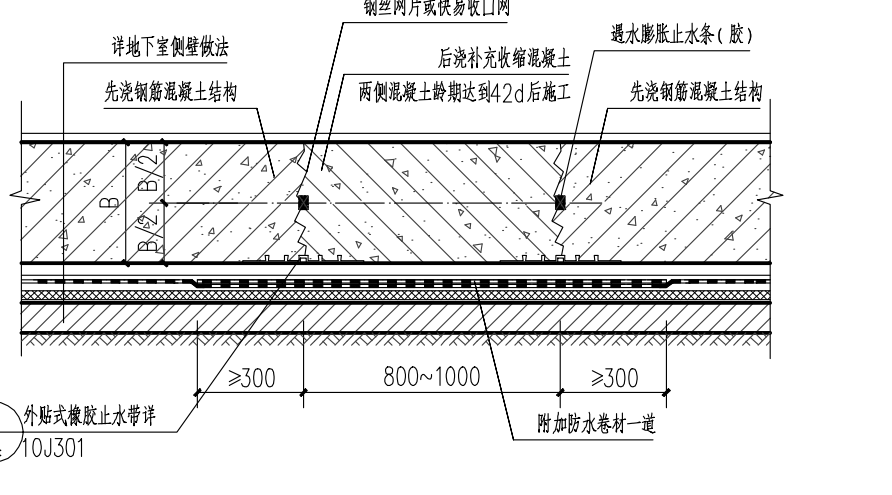
⑬ 顶板变形缝防水节点 1:25



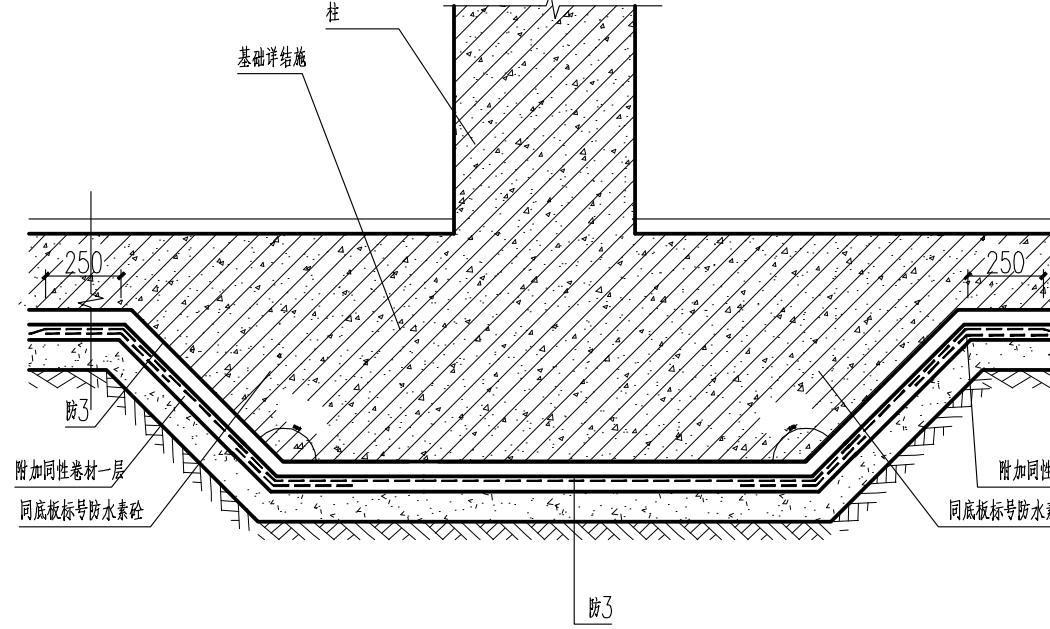
⑭ 底板后浇带防水大样图 1:25



⑮ 顶板后浇带防水大样图 1:25



⑯ 侧壁后浇带防水大样图 1:25



⑰ 柱基础防水大样 1:25