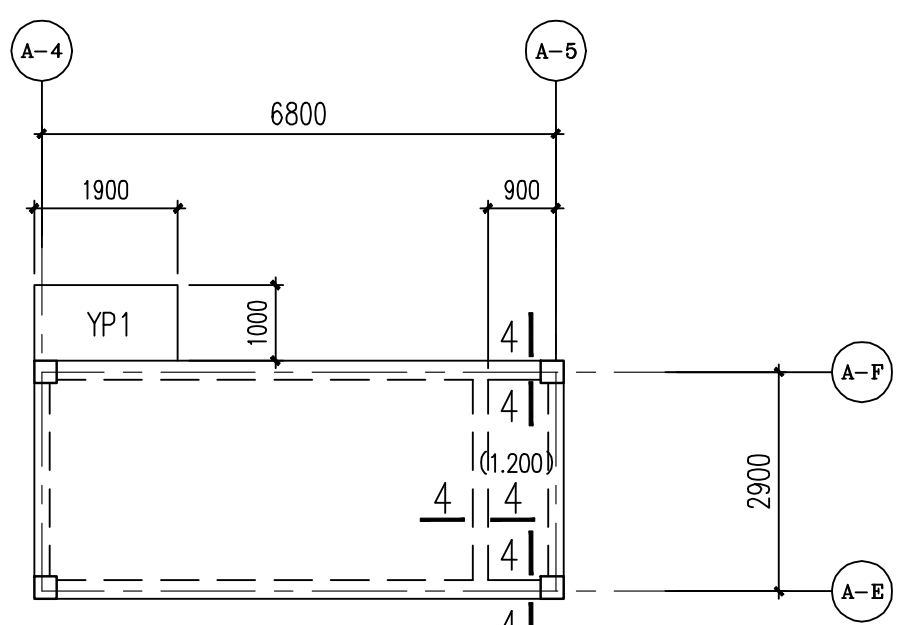
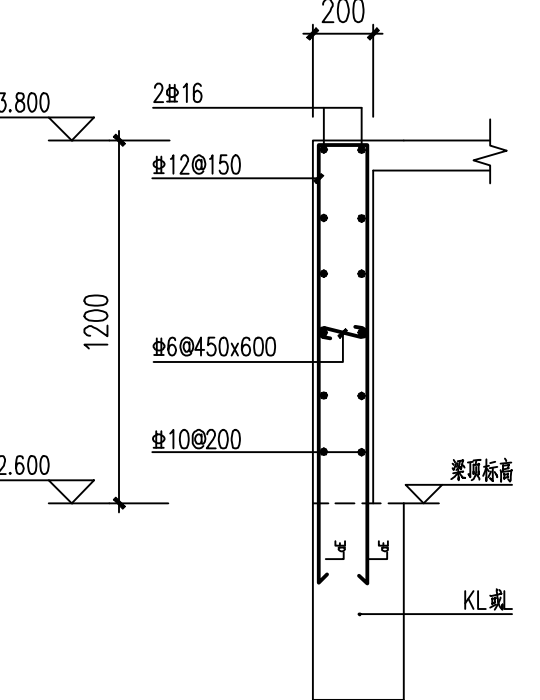


总图	建筑	结构	给排水
暖通	电气	弱电	工艺
	ELEC.	W&A COMM.	DMT

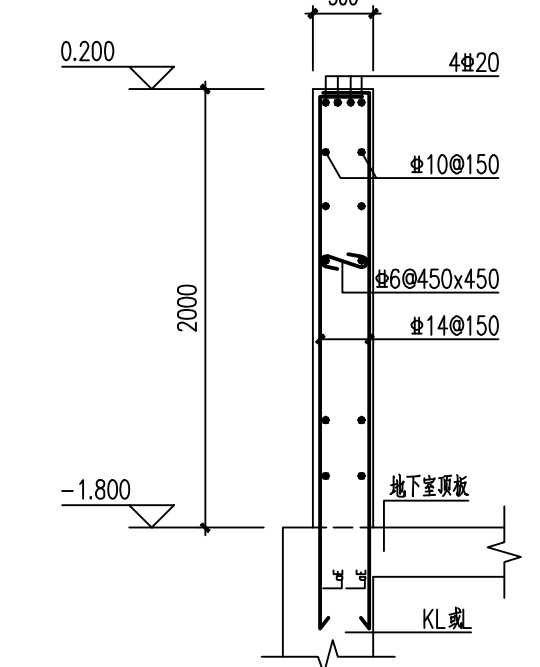


梯屋面结构模板图

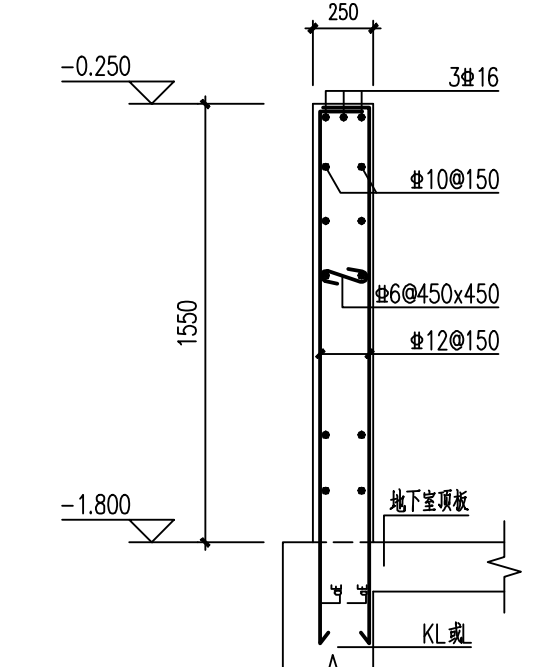
说明: 1. 梁定位未标注者均为轴线居中或平柱边。
2. 本图未详事宜应按结构设计总说明中相关要求施工。



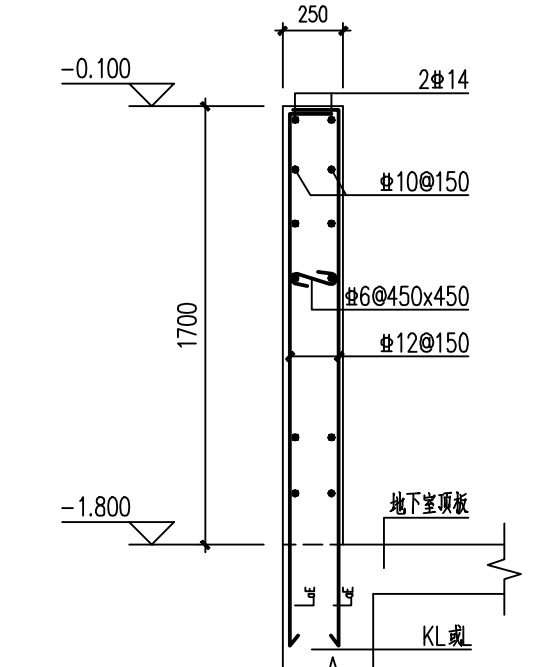
4-4 梁顶标高低于板顶标高大样



3-3 地下车库顶板汽车坡道挡土反边大样



2-2 地下车库顶板楼梯间挡土反边大样

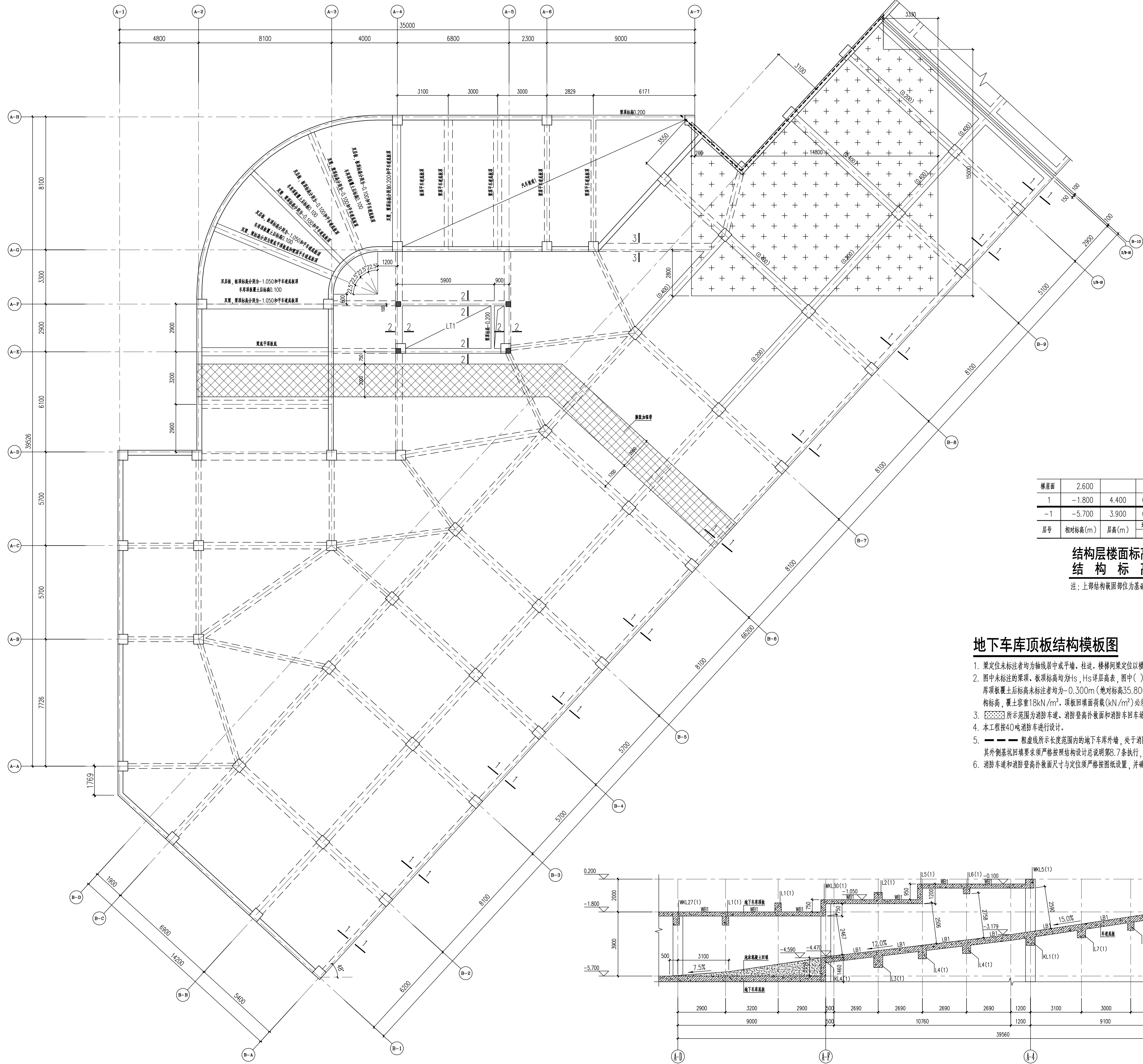
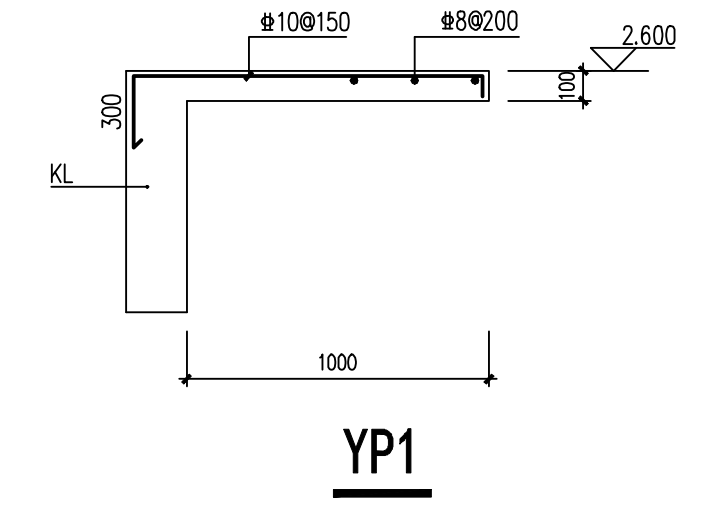


1-1 地下车库顶板挡土反边大样

梯屋面	2.600			C30
1	-1.800	4.400	C30	C35
-1	-5.700	3.900	C35	C35
层号	相对标高(m)	层高(m)	墙、柱、梁、板 混凝土强度等级	

结构层楼面标高	结构标高
±0.000	±0.000
1.150	1.150
2.300	2.300
3.450	3.450
4.600	4.600
5.750	5.750
6.900	6.900
8.050	8.050
9.200	9.200
10.350	10.350
11.500	11.500
12.650	12.650
13.800	13.800
14.950	14.950
16.100	16.100
17.250	17.250
18.400	18.400
19.550	19.550
20.700	20.700
21.850	21.850
23.000	23.000
24.150	24.150
25.300	25.300
26.450	26.450
27.600	27.600
28.750	28.750
29.900	29.900
31.050	31.050
32.200	32.200
33.350	33.350
34.500	34.500
35.650	35.650
36.800	36.800
37.950	37.950
39.100	39.100
40.250	40.250
41.400	41.400
42.550	42.550
43.700	43.700
44.850	44.850
46.000	46.000
47.150	47.150
48.300	48.300
49.450	49.450
50.600	50.600
51.750	51.750
52.900	52.900
54.050	54.050
55.200	55.200
56.350	56.350
57.500	57.500
58.650	58.650
59.800	59.800
60.950	60.950
62.100	62.100
63.250	63.250
64.400	64.400
65.550	65.550
66.700	66.700
67.850	67.850
69.000	69.000
70.150	70.150
71.300	71.300
72.450	72.450
73.600	73.600
74.750	74.750
75.900	75.900
77.050	77.050
78.200	78.200
79.350	79.350
80.500	80.500
81.650	81.650
82.800	82.800
83.950	83.950
85.100	85.100
86.250	86.250
87.400	87.400
88.550	88.550
89.700	89.700
90.850	90.850
92.000	92.000
93.150	93.150
94.300	94.300
95.450	95.450
96.600	96.600
97.750	97.750
98.900	98.900
100.050	100.050
101.200	101.200
102.350	102.350
103.500	103.500
104.650	104.650
105.800	105.800
106.950	106.950
108.100	108.100
109.250	109.250
110.400	110.400
111.550	111.550
112.700	112.700
113.850	113.850
115.000	115.000
116.150	116.150
117.300	117.300
118.450	118.450
119.600	119.600
120.750	120.750
121.900	121.900
123.050	123.050
124.200	124.200
125.350	125.350
126.500	126.500
127.650	127.650
128.800	128.800
129.950	129.950
131.100	131.100
132.250	132.250
133.400	133.400
134.550	134.550
135.700	135.700
136.850	136.850
138.000	138.000
139.150	139.150
140.300	140.300
141.450	141.450
142.600	142.600
143.750	143.750
144.900	144.900
146.050	146.050
147.200	147

：上印后付歌回印位为整箱以。



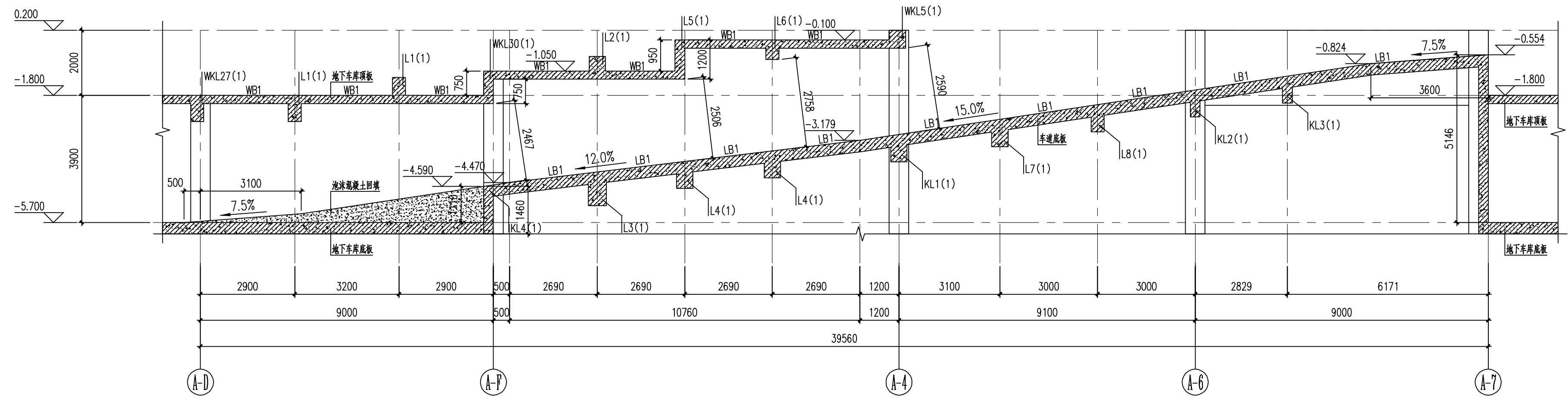
梯屋面	2.600			C30
1	-1.800	4.400	C30	C35
-1	-5.700	3.900	C35	C35
层号	相对标高(m)	层高(m)	墙、柱、梁、板 混凝土强度等级	

结构层楼面标高
结构标高

注：上部结构嵌固部位为基桩顶。

地下车库顶板结构模板图

- [illegible]



汽车坡道剖面大样图

说明:1. 图中米字在圆圈内表示,米字在方圈内为井,米、收、增、注、配管片均取米、收、注法施工图中和增在平面布置图。